

ESP-Crab Circuit Diagram Explanation

1. Pin Order Table

1.1 Master Pin Order

PIN	FNC
GPIO1	ADC Button
GPIO2	WS2812 Driver
GPIO3	LCD_BLK
GPIO4	LCD_DC
GPIO5	LCD_SCL
GPIO6	LCD_SDA
GPIO7	LCD_RST
GPIO8	TP_SCL
GPIO9	TP_SDA
GPIO10	TP_INT
GPIO23	Buzzer

1.2 Slave Pin Order

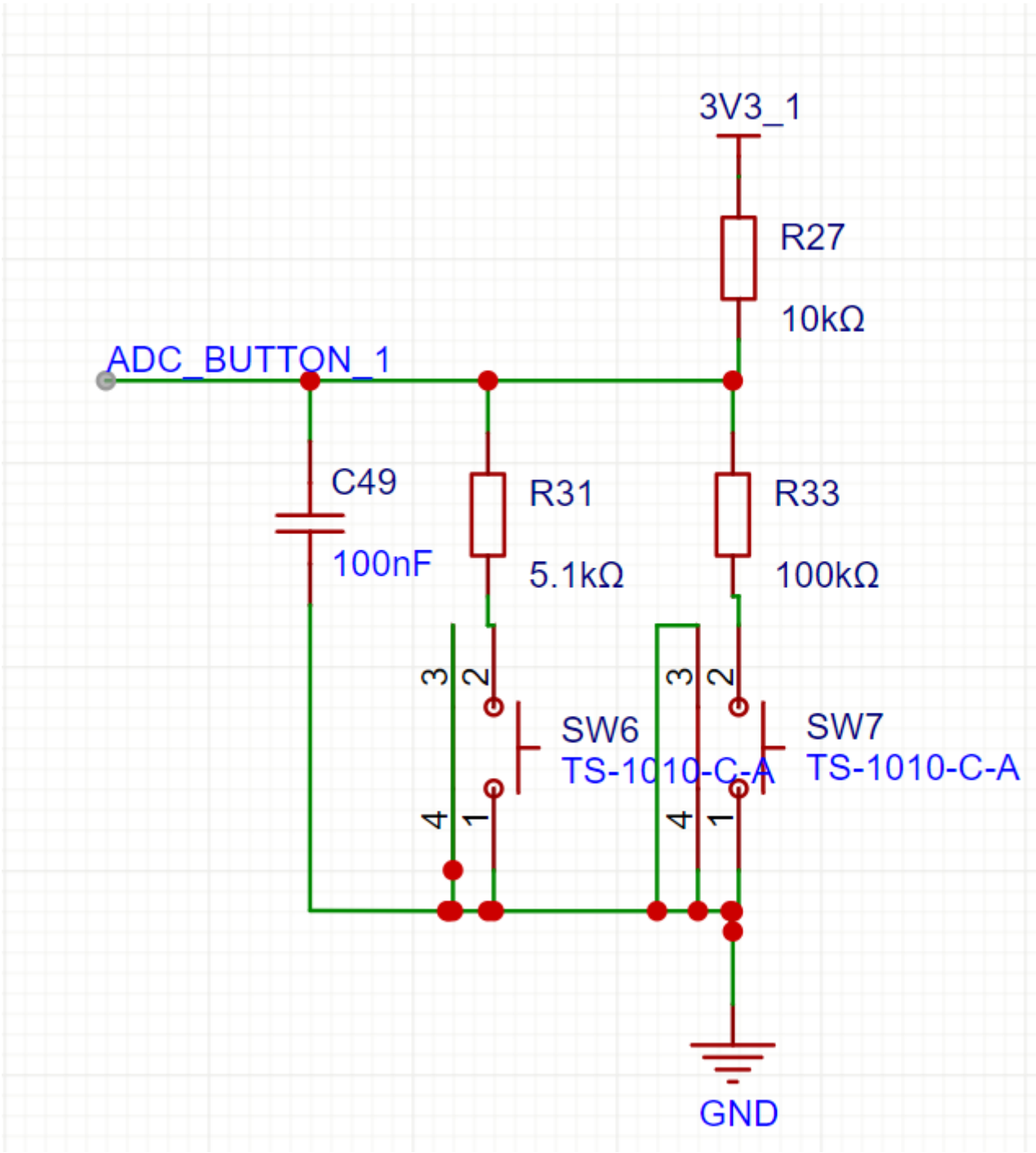
PIN	FNC
GPIO2	SD_CS
GPIO5	SD_MOSI
GPIO6	SD_CLK
GPIO7	SD_MISO
GPIO10	WS2812 Driver

1.3 Master-Slave Interconnection Pins

Master PIN	Slave PIN
GPIO0	GPIO28
GPIO24	GPIO1
GPIO25	GPIO2
GPIO26	GPIO11

Master PIN	Slave PIN
GPIO27	GPIO12
GPIO11	GPIO26
GPIO12	GPIO25

2. ADC Button Description



3. PCB Layout Description

No.	Function
1	Master External Antenna

No.	Function
2	Master Onboard Antenna
3	Slave External Antenna
4	Slave Onboard Antenna
5	Master BOOT Button
6	Master ADC Button
7	Slave BOOT Button
8	Master 2.4G Antenna Switch Resistor
9	Master 5G Antenna Switch Resistor
10	Slave 5G Antenna Switch Resistor
11	Slave 2.4G Antenna Switch Resistor
12	RST Button

